



## 1 Rowan Lodge 42 Limebush Close

New Haw, Addlestone, KT15 3LW

**Asking price £289,950**

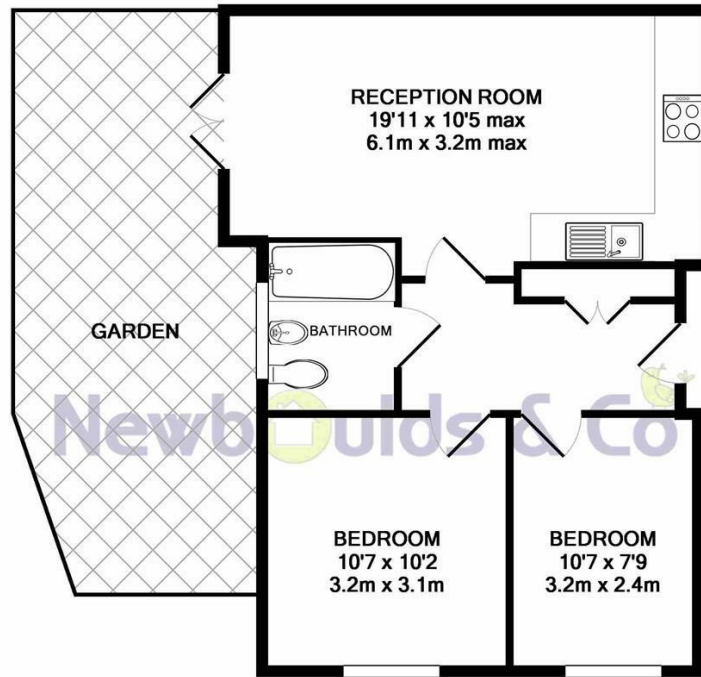


**GARDEN APARTMENT** - Built in late 2016 is this contemporary two-bedroom garden apartment. Consisting of two bedrooms, three-piece bathroom suite and an open plan reception incorporating the kitchen. The reception room has French doors that open on to the private garden, a great place to enjoy and entertain. The interiors are stunning as you would expect from a modern apartment and as the property is only 2 years old there are still 8 years remaining on the warranty. There is underfloor heating within the apartment and high-quality finishing throughout. The block itself has security entry system, allocated parking and solar panels. This could make an ideal first time purchase or perhaps suit a downsizer or an investor. Apartments in such good condition with private outside space are rare to the market and with a lease in excess of 900 years and low running costs we suggest you view at your earliest convenience. EPC Rating: B





## Floor Plan



TOTAL APPROX. FLOOR AREA 527 SQ.FT. (49.0 SQ.M.)

Whilst every attempt has been made to ensure the accuracy of the floor plan contained here, measurements of doors, windows, rooms and any other items are approximate and no responsibility is taken for any error, omission, or mis-statement. This plan is for illustrative purposes only and should be used as such by any prospective purchaser. The services, systems and appliances shown have not been tested and no guarantee as to their operability or efficiency can be given  
Made with Metropix ©2019

## Area Map



## Viewing

Please contact our Shepperton - Sales Office on 01932232927 if you wish to arrange a viewing appointment for this property or require further information.

These particulars, whilst believed to be accurate are set out as a general outline only for guidance and do not constitute any part of an offer or contract. Intending purchasers should not rely on them as statements of representation of fact, but must satisfy themselves by inspection or otherwise as to their accuracy. No person in this firm's employment has the authority to make or give any representation or warranty in respect of the property.

## Energy Efficiency Graph

